

# Ōhope Beach School Board of Trustees Newsletter

Kohitātea/January 2021



## NAU MAI, HAERE MAI

Welcome back to returning students, their whānau, and those students and staff new to Ōhope Beach School!

As a Board of Trustees, we are committed to ensuring the educational experience for our tamariki/children is positive. We strongly believe that education is a partnership between home, school and the community, and we recognise the need to continue to develop this partnership. We welcome and encourage parents and caregivers to be involved in the life of the school and we encourage you to stay connected in a number of ways.

We bring you the first update of the year with the intention to inform you of some of the key decisions made more recently. Any decision made from the Board looks to make a positive impact on students, staff, the school and the wider community where possible. Happy reading!

Ngā mihi,  
Ōhope Beach School Board of Trustees

The Board's job is to see that everything that needs to be done gets done - legally, ethically, and as well as possible in the best interests of its students. The Board is also the employer of all staff, including the Principal, and sets the overall strategic direction for the school.

A number of changes will be implemented this year with focus given to these key areas which are also reflected in our schools strategic plan:

- Māori Student Achievement
  - Learning Through Play
  - Localised Curriculum
  - Digital Technology
  - Iwi Connections

For Term 1, focus will be given to evolving PB4L practices beyond the classroom to be integrated within the school-wide Behaviour Management Plan.

As some of you may have already noticed, our key PRIDE values are mentioned in the school newsletter with attention given to particular values and behaviours across the school year. The hope is that the school values and behaviours are also seen and celebrated across the wider school community.

This year, Mrs Alex Hanlen will be a walking Deputy Principal, allocating more resources for leadership and school-wide responsibilities. The decision to go to a full time released Deputy Principal is to ensure we offer support in key areas including having a specific focus on pastoral care for students.

As previously mentioned, the relationship between school and home is vital. We encourage you to stay up to date with not only your child/ren, but with the happenings of the whole school. You can do this via the School App, classroom digital platforms such as seesaw and through the school newsletter. We will also continue to share the dates of board meetings (in the newsletter) and encourage you to check the School Policy documents (via the school website) to understand more around relevant processes, expectations and procedures.

## FUNDRAISING GROUP

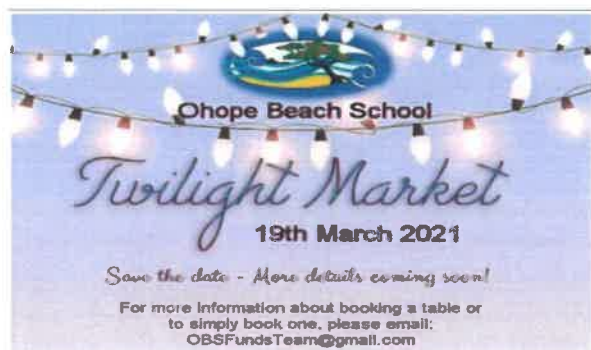
In 2020, a fantastic group of people supported the school through various events/fundraising initiatives. We are still improving how we best share information around support the Fundraising Group. So here's some of the highlights of last year's efforts:

- Munchy lunch
- Calendar Art
- Disco

Funds from these events/activities have contributed towards the play spaces development, food for school camps and food for the Year 6 leavingdinner.

This year, the group is looking into holding a Twilight Market at school on Friday 19th March. As you can imagine, a vast supply of people and support is necessary for these types of events. The past has also featured some very successful Quiz nights, movie nights and other sponsorship type events.

All/any support is welcomed and encouraged.



## BOARD MEETING DATES

Usually held on Tuesdays at 5.30pm, the following meeting dates are subject to change:

TERM 1: 2nd & 30th March

TERM 2: 18th May & 22nd June

TERM 3: 10th August & 14th September

TERM 4: 2nd November & 30th November

We encourage you to check-in with the school office or keep an eye on the school newsletter to confirm.

## PROPERTY

This year, more focus and attention will be given to play based learning experiences around the school including the construction of the new senior playground, paint markings on sealed surfaces for games and additional learning experiences within the outdoor spaces.

## SCHOOL DONATIONS

The Board have revised the school donation schedule this year to:

1 child = \$100 (\$25 per term)

2 children = \$190 (\$47.50 per term)

3+ children = \$240 (\$60 per term)

School donations received will be used to cover the costs associated with Athletics (Yrs 3-6), Mathseeds (Yrs 1 & 2), Reading Eggs (Yrs 1-4), Life Education visit, shows, bus transport for school trips and some sports costs. This is intended to significantly reduce the previous costs to parents and reduce the number of ad hoc requests for payments throughout the year.

*We ask that you continue with those health and hygiene processes, both at school and at home to keep ourselves healthy.*

The Board is made up of parent electives: Ben Gibson (Chair), Sarah Evans, Lizzy Horlock, Wayne Marriott, Allan Muggerridge; the Principal Cathryn Naera and the staff elected representative Nicky Baker.

Key contact: [botchair@ohopebeach.school.nz](mailto:botchair@ohopebeach.school.nz)